

**Curriculum Vitae 2016**



Robert J. Bitterli is the President and CEO of Ivy Group Consultants, Inc., a corporation formed for the specific purpose of servicing client needs for **Building Sciences, Forensic Architecture and Expert Consultant Services** on claims related projects and legal cases involving building design and construction defects. The firm also focuses on **Building Restoration, Preservation, and Exterior Roof, Wall and Window Re-Cladding** projects. The firm has grown over the past 28 years of service to the industry under the following names:

**Firm History:**

Ivy Group Consultants, Inc.	2005 – Present
Ivy Group Consulting (D.B.A.)	2000 – 2005
HADP Architecture, Inc.	2000 – 2012
Bitterli & Associates Architects, Inc.	1986 – 1999

Mr. Bitterli brings a broad range of professional accomplishments, outstanding design work, and 37 years of experience in professional practice. His project experience covers a wide range of building types including: **Educational, Corporate, Governmental, Health Care, Historic Preservation, Single & Multi-Family, Recreational, Religious and Retail Facilities.**

Mr. Bitterli's **expertise is invaluable** to clients seeking claims experience in building forensic investigations, expert witness testimony, Envelope (Roofing, Wall, Window, Door, Skylight) Inspection & Commissioning BECx, LEED Certification, Sustainable Design, environment/resources, claims resolution, building code issues, accessibility (ADA/ADAAG, FACBC), scheduling, estimating, design detailing, construction materials, roofing, moisture proofing, indoor air quality, engineering systems integration and professional practice. Throughout his career he has provided clients with a **personal commitment**, delivering expert consultant services in a **forthright manner**, with both **pragmatic and theoretical** perspectives in mind.

Mr. Bitterli regularly provides expert witness/forensic services on building defect issues to **attorneys, plaintiffs, defendants, insurance companies and building owners** throughout the Southeastern United States. He has recently served on several technical advisory committees in the development of the Florida Building Code 2001/2004 editions, and has **taught Florida Building Code seminars** to licensed Architects and Engineers throughout Florida and Georgia. Mr. Bitterli has presented multiple courses on the Florida Building Code and Wind Load Design to the American Institute of Architects (local, state, and national), and the American Society of Civil Engineers at the statewide level as well as Building Failure case studies and the Forensic Investigation process.



Mr. Bitterli served as a voting member of the **Building/Structural Advisory Committee to the Florida Building Commission** and represented the Florida American Institute of Architects in matters regarding the Florida Building Code. Mr. Bitterli also served on the Florida American Institute of Architects Building Code Task Force. He is a member of the International Codes Council (ICC), the National Institute of Building Sciences (NIBS), Institute for Business and Home Safety (IBHS) and the National Fire Protection Association (NFPA). He recently authored the article, *Selecting an A/E/C/S Expert for Your Construction Defects Case*, published in Res Gestae, the Monthly publication of the Lee County Bar Association. He recently founded and chairs the **Tampa Bay Building Enclosure Council (TBEC)**, a joint venture of AIA National and the National Institute of Building Sciences.

---

**SELECTED PROJECTS**

**Signature Tower: Stucco Recladding & CMU Repair + Litigation Support**

*Forensic Architect for Plaintiff*

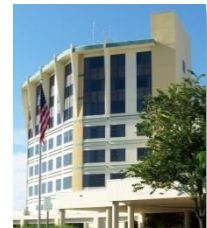
Lead Plaintiff Expert Team, Structural, IAQ,  
Investigated and Documented Stucco and CMU Defects  
36 Story Luxury Condo, \$20 Million Claim, 2 Year Investigation and Litigation  
\*Currently Active



**Lee Memorial Health Park South: Moisture Intrusion Investigation & Re-Cladding Project**

*Forensic Architect for Plaintiff*

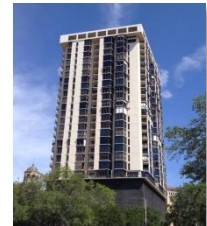
Lead Forensic Investigation, Testified in Deposition, Litigation Support  
Pediatric/Surgical/Patient Units, \$20 Million Claim, \$12 Million Repair Project, 3+ Years  
Successful Settlement for Client: January 2012  
Completed Re-Cladding Project: August 2014



**Bayfront Tower: Waterproofing Project**

*Envelope Consultant*

Produced Conditions Assessment Report, Managed Bid Documents & Bid Selection,  
Observed and Documented Waterproofing and Painting by Contractor  
28 Story Condo, \$600k Contract, 6 Month Project  
\*Currently Active



**The Alagon on Bayshore:**

*Forensic Architect for Defense of SSAA Architects*

Produced Defense Report for Insurer, reviewed Architect's Standard of Care  
23 Story Condo on Bayshore Blvd, Tampa, FL  
Settled in 2010



**Meadows of Estero: Roof Repair Project**

*Forensic Architect for Plaintiff*

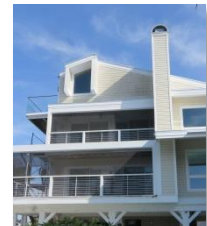
Testified in Mediation/Settlement, Managed Bid Documents & Bid Selection  
Represented Owners, oversaw Contractor & developed scope Pay-Apps  
45 Buildings, \$823k Contract, 8 Months  
\*Currently Active



**Thurling Residence: Leakage Investigation**

*Forensic Architect for Plaintiff*

Performed Testing and Documentation using various, Standard Driven Methods, for  
Moisture Intrusion Detection for a Construction Defect Claim  
Single Family Residence, \$400k Claim, 3 Days of Testing & Observation  
February 2016



**Curriculum Vitae 2016**

---

**PROFESSIONAL QUALIFICATIONS**

- Registered Architect 1979 - Present
  - State of Florida Number 8235
  - State of Texas Number 22630
  - State of Georgia Number RA012955
- National Council of Architectural Registration Boards (NCARB)
  - Certified Number 42,542
  - State of Maryland, Number 9312 (inactive)
  - State of Indiana, Number 920140 (inactive)
  - State of Utah, Number 02391-0201-0 (inactive)

---

**EDUCATION**

- University of Florida
  - M.A. Architecture (Honors) 1977
  - Thesis Publication: Energy, Architecture and Society 1977
    - Master's Degree Emphasis Area: **Building Structural Design**
    - Completed 27 additional credit hours of Masters work in structural design, covering concrete, steel, wood, foundation, and other structural design analysis
  - AIA Silver Medal Award, University of Florida Faculty 1977
  - Gargoyle Honor Society 1975
  - B.S. Design (Honors) 1975
- St. Petersburg College 1972
- St. Petersburg Senior High School 1971

---

**PROFESSIONAL AFFILIATIONS**

- AIA/NIBS Tampa Bay Building Enclosure Council (TBPEC)
  - Chairman 2013 - Present
- AIA NATIONAL 1978 - Present
  - Committee on the Environment (COTE) 1992 - 1996
- AIA FLORIDA 1978 - Present
  - Director 1989 - 1992
- AIA TAMPA BAY 1986 - Present
  - Director 1989 - 1992
  - President 1991
  - Environmental Committee Chairman 1992 - 1996
- AIA ST. PETERSBURG 1986 - Present
  - President 1988
- Southern Standard Building Code Congress 1992 - 2002
- ICC (International Code Council) 2002 - Present
- Florida Education Facility Planners Assoc. (FEFPA) 1992 - 2008
- St. Petersburg Preservation, Inc. 1994 - 2000
- USGBC (United States Green Building Council) 2007 - Present
- NIBS (National Institute for Building Sciences) 2008 - Present
- NFPA (National Fire Protection Association) 2008 - Present
- IBHS (Institute for Business and Home Safety) 2009 - Present
- RCI (Roof Consulting Institute) 2010 - Present
- ASTM (American Society of Testing and Materials) 2010 - Present

**Curriculum Vitae 2016**

---

**APPOINTMENTS & BOARDS**

- Tampa Bay Building Enclosure Council, Founding Chair 2013-Present
- Florida Association-American Institute of Architects (AIA), Building Codes Committee 2000-2008
- Florida Gulf Coast USGBC Membership Committee and Co-Chair Regionalization Task Force 2008-2009
- Review and creation of a New Model Code for Florida 1998-2006  
Monthly Florida Building Commission meetings, and Technical Advisory Committee meetings, reviewing relevant code provisions and providing input to the Commission on behalf of the Florida Association of the American Institute of Architects.
- Building/Structural Technical Advisory Committee 1998-2006
- Building/Fire Technical Advisory Committee 1998-1999
- Admin/Code Enforcement Tech. Advisory Committee 1998-1999
- Planning and Historic Preservation Commission Chairman 2002  
Architect/Professional Member, City of St. Petersburg 1998-2004
- St. Petersburg College – Department of Architectural Technology  
Chairperson, Advisory Committee 1992-2002  
Member, Advisory Committee 1986-2002
- Advocates for Shelter Action/Policy (ASAP) Advisory Board Member 1991-2000
- Pinellas County Economic Development Council Judge, Environmental Excellence Award 1991

---

**SEMINARS/CONFERENCES PRESENTED**

- 5 Roof and 5 Wall Case Histories of Failures, TBEC/AIA 2016
- Roof and Wall Failure Case Studies and the Forensic Evaluation Process 2014
- Building Case Study of Building Failure - AIA 2012
- Expert Witness Consulting in Building Claims 2012
- Building Claims & Expert Witnesses – Stetson Law School 2011
- Cost of Construction 2006  
Charlotte County Public Schools, Board Workshop
- Wind Load Design for Buildings 2003  
American Institute of Architects  
American Society of Civil Engineers
- New Florida Building Code Course 2002  
Atlanta, GA; West Palm Beach; Jacksonville; Tampa/St. Petersburg;  
Miami/Coral Gables; Ft. Lauderdale; Palm Beach, FL
- SMPS Design/Build Seminar – St. Petersburg, FL 2001
- AIA A201 General Conditions Seminar – Tampa, FL 1998  
Conference Facilitator (3-Part Series)
- AIA National, Environmental Video Teleconference 1993  
Seminar Presenter
- AIA Tampa Bay, Environmental Building Design Seminar 1992  
Seminar Presenter
- AIA Tampa Bay, Practice and Management Seminar 1989  
Chairman
- AIA Tampa Bay, Smart Buildings Trade Show and Seminars 1989

**Curriculum Vitae 2016**

---

**AWARDS**

- American Schools & University, CTC Medical Sciences Building 2007
  - American Schools & University, Cypress Hall of Tampa 2005
  - American Schools & University, Technology Learning Center 2000
  - Florida Education Facility Planning Assoc., SPC Seminole Campus 2000
  - APA Award of Excellence, Dome District Business Plan 1998
  - SPPI/AIA Historic Preservation Award, Williams House (USF) 1997
  - SPPI/AIA Historic Preservation Award, Grace Lutheran Church 1995
  - SPPI/AIA Historic Preservation Award, Bays Dialysis Clinic 1995
  - PEDC's Environmental Excellence Award, Micro Mo Electronics 1991
  - AIA State of Florida Chapter Award (while President) 1991
  - AIA State of Florida, Certificate of Appreciation 1991
  - AIA Tampa Bay Pullara Award for Outstanding Service 1990
- 

**PUBLICATIONS**

- Building Environment & Staff Performance Analysis Current
  - Stucco Defects & Building Skin Leakage Current
  - Building Science 101: Missing Paint and Escargot. *M. Wright and R. Bitterli.* 2014  
RCI Interface Magazine
  - "Selecting an A/E/C/S Expert for Your Construction Defects Case" June 2014  
Res Gestae - Monthly publication of the Lee County Bar Association
  - "The Facility Report", Publisher 1999 - 2000  
A quarterly newsletter covering facility and construction trends cost information and other items of interest to the facility professional. The newsletter was published for five consecutive quarterly publications prior to the Bitterli+Assoc. merger with Harper Partners in January, 2000.
  - Article on project design using 4 case studies 1984  
Florida Architect Magazine
  - Energy, Architecture & Society 1977  
A thesis document on the impact of Energy and Resource Limits on Architecture and Society
- 

**CIVIC & RECREATIONAL AFFILIATIONS**

- Ivy Group Sustainable Living Foundation, Founder 2012 - Present
  - Hands4Hope, Inc. - Education Aid Organization, Supporter 2012 - Present
  - Partners With Haiti, Inc., Supporter 2005 - Present
  - Northeast Exchange Club (Ribfest Promoter), Member 1986 - 2013
  - St. Paul's Catholic Church, Member 1971 - Present
- 

**VOLUME OF WORK**

Directly responsible for the following quantities (MOL) of Architectural Design and Construction Administration Services:

- Architectural/Engineering Fees \$ 55 million
  - Construction Value \$ 850 million
  - Square Footage of Construction 10 million square feet
  - Roofing Design
    - Built-up/Single Ply Membrane 3.0 million square feet
    - Sloped Roofing (Metal, Tile, Shingle) 2.5 million square feet
  - Waterproofing/Restoration/Repair Projects:
    - Multi-family Housing 15 projects
-

**Curriculum Vitae 2016**

Commercial/Educational	55 projects
• Range of Project Sizes/Values:	
Commercial/Educational	\$ 50,000 - \$40.0 million
Multi-family	\$250,000 - \$40.0 million
Single Family	\$ 30,000 - \$5.0 million

---

**SCOPE OF SERVICES**

Construction Claims & Expert Witness Services account for 90% of Mr. Bitterli's time.

• Cases as Expert: Witness/Forensic Consultant	272 Assignments
• Active Cases 2016:	66 Assignments
• ADA Accessibility Consulting	23 Assignments
• ADA Accessible Projects Designed	125 + Buildings
• Court/Arbitration/Deposition Expert Witness Testimony (under oath)	69 Assignments
• Mediation Expert Witness Testimony	89 Assignments
• Consulting Work Breakdown:	
Moisture Consulting (Painting, Coatings & Waterproofing)	152 Assignments
Repairs Consulting (Design, Construction Doc.s, Bidding, C/A)	165 Assignments
Accessibility Consulting	23 Assignments
Roof Consulting	106 Assignments
LEED Certification & Sustainable Design (23 Buildings)	4 Projects
Codes / Standards	197 Assignments
Fire / Flood Loss / Insurance Claims	19 Claims
Malpractice / Standard of Care	103 Claims
Copyright Infringement	3 Claims
Personal Injury	15 Assignments
Cost Estimates / Scheduling	125 Assignments
Inspection Reporting	212 Assignments
Other Services	105 Assignments

---

**STRUCTURAL DESIGN & ENGINEERING COORDINATION**

- Performed Architectural and Structural design of approximately 75 single-family residential projects, additions and alterations.
- Coordinated the civil, structural, mechanical, electrical, plumbing and fire protection engineering, utilizing Florida license engineers employed under the direct supervision of Mr. Bitterli's architectural firm (and previous employing firms)
- Offered amendments affecting 20 pages of text regarding simplification of FBC Chapter 16 – Structural Design, now incorporated into the Florida Building Code.
- Served as an appointed voting member on the Building / Structural Technical Advisory Committee to the Florida Building Commission. Committee analyzes all structural and building code amendments, provisions and declaratory statements.

---

**COST ESTIMATING**

- Mr. Bitterli has performed estimating work on more than 100 projects ranging from small residential projects (\$60,000) to large Commercial/Educational projects (\$25 million)
- Estimating database is developed using R.S. Means, Dodge and Marshall Swift Cost Data Bases as well as professional experience.
- Experience in estimating projects, combined with an in-depth understanding of the relative costs associated with phasing, general conditions and overhead/profit factors has allowed Mr. Bitterli's clients to enjoy a high confidence level in their project costs.
- Typically, project bids submitted by General Contractors range from 20% to 30% from high bid to low bid, which is representative of the industry.

## Curriculum Vitae 2016

- Mr. Bitterli's goal – and generally contractual obligation – is to predict within a margin of 5% the lowest qualified bid price on each project estimated.
- The firm consistently predicts the lowest qualified bid price in both residential and commercial/educational/municipal projects.
- Over 100 Estimates of Probable Construction Costs performed since 1986.

---

## CONTINUING EDUCATION

- Preventative vs. Differed Maintenance for Buildings 2017
- Restoration: The Ultimate Act of Sustainability 2017
- Open Cell Spray Foam Insulation in Commercial Buildings 2017
- What's in a Specification? 2017
- BEC Roof & Wall Failures in the Southeastern US (2) (Instructor) 2016
- 5<sup>th</sup> Edition (2014) Florida Building Code Advanced Class for Fenestration (2) 2016
- Vinyl Windows: Designed for Performance 2016
- Introduction to Laminated Glass 2016
- How Low-E Coatings Improve Building Performance 2016
- Virtual World of Glass 2016
- Installation Best Practices Based on FMA/AAMA 200-12 2016
- PGT Glass/Window/Door Manufacturing Plant Tour 2016
- PVC Roofing Materials- Performance, Construction 2016
- PVC Roofing Materials-Functionality 2016
- Aluminum Composite Material (ACM): Sustainable Materials & Processes 2016
- Proper Installation of Below-Slab Vapor Retarders/Barriers: ASTM E1643 2016
- Use of Coatings to Prevent Mold and Mildew Damage/DE-A (1.5) 2016
- The Building Envelope Solution (1.5) 2016
- Preparation Methods of Concrete Substrates for Application 2016
- Advanced Coating Technology & the Sustainability Movement 2016
- Decorative Concrete Opportunities & Techniques 2016
- Colormix 2016 2016
- Single Ply Roofing Technology C102A 2016
- Single Ply Roofing Technology C102SE 2016
- International Projects/Practices 2016
- Design for Visual Accessibility and the Multi-Sensory Experience 2016
- Successful Techniques to Communicate 2016
- Starting Your Own Firm 2016
- International Projects Panel Discussion 2016
- Ownership Transition – Its Financial, Legal and Generational Issues 2016
- Design Opportunities Utilizing Masonry 2016
- BEC: Design & Construction Liability 2015
- Glass +Metal Symposium, Designing the Building Envelope (4) 2015
- Building Science 101- The Building Envelope (4) 2015
- Safe and Effective Learning Classrooms 2014
- Arch. Contracts and Professional Liability Insurance Coverage (2) 2014
- Fenestration Mitigation- Advanced (2) 2014
- Windows & Doors for Wind-Borne Debris 2014
- Building Envelope Failures and the Forensic Investigation Process (Instructor) (2) 2014
- Fundamentals of Design for Proper Energy Conservation 2014
- Detailing in Transition: Hybrid Walls and the Evolution of Terra Cotta Detailing 2014
- Onshore vs. Offshore Curtain Wall Systems 2014
- Energy Penalty Assoc. and Mechanically Attached Roofing Systems 2014

**Curriculum Vitae 2016**

• Fan Pressure Testing for Large, Complex Buildings	2014
• Properties that Stink (Literally)	2014
• Not So Pretty in Pink: Death of a Thin-Stone Veneer	2014
• Air Barrier Systems- Understanding the Technologies and Their Importance	2014
• Stucco Failure: Factors that Cause Damage – TBEC & SEI	2014
• Fluid Applied Roofing & Waterproofing Membranes	2013
• Glass+Metal Symposium (4)	2013
• Design Considerations for Modern Building Envelope, Sika Corp.	2013
• Sealants and Adhesives for Construction, Sika Corp.	2013
• Building Science 101 – Building Envelope Performance	2013
• Repair and Protection of Concrete, Sika Corp. (2)	2013
• Advanced FBC, The Florida Building Commission	2013
• Advanced Florida Building Code	2013
• Expert Witness Testimony in Construction Litigation Cases (Instructor)	2013
• Claims Relating to Roof & Wall Envelope Moisture Intrusion Failures (Instructor)	2013
• BETEC Symposium at NIBS Conference & Expo (8.5)	2013
• Multi-hazard Mitigation Council- Large Symposium at NIBS Conference & Expo (8.5)	2013
• Florida Construction Law	2013
• Collecting Payment on Construction Projects	2013
• Benefits of KEE in PVC Membranes	2013
• Dynamic Electrochromatic Facades	2012
• Basics of Paint	2012
• Hardware Magic	2012
• Designing with Translucent Panel Daylighting Systems	2012
• Laminate Technical Review	2012
• Sustainable Design – Low Emitting Paints & Coatings	2011
• LEED 09 Programs: Overview	2011
• Elevator Technology. Where it' been. Where it's going.	2011
• Intro to Integrated Project Delivery (IPD)	2010
• Cool Metal Roofing & Solar Technology	2010
• Expansion Joints: Specs, Installation & Verification	2010
• I.C.F. for Sustainable Design & Construction	2010
• New Florida Laws Affecting Construction Professionals	2010
• Florida Laws & Rules Seminar	2010
• Florida Energy Code & The Florida Building Code	2010
• Mitigation Inspections & The Florida Building Code	2010
• Economics of LEED EB: Beyond Sustainability to True Cost Savings	2010
• Elevator Technology: Latest Advancements	2010
• Plumbing Products Contribution to Water Conservation	2010
• Daylighting for Tomorrow's Buildings	2010
• Fire Rated Glass & Framing	2010
• KMC001 Silicate Coatings Presentation	2010
• Analyzing LEED Points for Windows & Doors	2010
• Room By Room Approach to Energy Curtailment & Greening at BAE Systems	2009
• High Profile Green Operations Marquee LEED for Existing Buildings	2009
• Case Study: Assessing Green Building Performance	2009
• A Revolution in Existing Buildings – LEED EBOM	2009
• Architects Guide to Designing with Polymers	2009
• CD6 802 – Codes Pertaining to Hardware	2009
• Sustainable Design Ideas Using Metal Roofing	2009



**Curriculum Vitae 2016**

- MAP005 – General Surface Preparation (MAPEI Corp) 2009
- Code Course, 2007 FBC Course 2009
- Trends in Waterproofing Tile/Stone Seminar 2009
- LEED EB Operations & Maintenance Course 2008
- LEED Webinar case study 2008
- ECO-Block ICF Seminar 2008
- LEEDing Internationally Seminar 2008
- Regenerative Hospitals Seminar 2008
- LEED Boston Office Tours 2008
- Navigating Green Labels Seminar 2008
- BURSI Roof Seminar 2007
- LEED NC Course 2007
- Indoor Air Pollution Seminar 2007
- Classroom Acoustics Seminar 2007
- Going Green LEEDing the way Seminar 2007
- Economic Forecast, Fishkind Seminar 2007
- Building Pathology Series Courses (Multiple Courses) 2007
- Florida Schools Construction Costs 2006
- 2004 Florida Building Code Update 2006
- Florida Accessibility Code Seminar 2006
- Mold Certification Course 2004
- OSHA Coursework 2004
- FEFPFA – E-Commerce Project / Miami-Dade Co. Public Schools 2002
- FEFPFA – Technology for Classrooms 2002
- FEFPFA – Facility Audit and Long Range Planning 2002
- ASCE 7-98 Wind Load Course
- New Florida Building Code, Building/Structural Course 2001
- New Florida Building Code, Building/Fire Course 2001
- Florida Building Commission, Unified Code Development & Technical Advisory Committee Meetings 1999 - 2000
- University of Florida Energy Efficient Affordable Housing 2000
- Florida Education Facilities Planners Association (FEFPA):
  - State Conference 1992, 1993, 2000, 2001
  - Workshops (FEFPA):
    - Greed Design & Architecture 2000
    - Working With the Media 2000
    - Building Construction Industry Advisory Committee 2000
    - Designing Safe and Secure Facilities 2000
- Quality Assurance/Control Seminar 1999
- Standard for Hurricane Resistant Construction Seminar 1999
- Independent Indoor Air Quality (IAQ) Study 1999
- Florida Real Estate Course Exam, License 1998
- Moisture Proofing Slabs in Buildings 1998
- Planning Commission Seminar 1998
- Learning Shock 2000: “The Changing Frontier in Education” 1994
- AIA National Committee on the Environment 1992, 1993
- AIA National Design Convention
  - Washington, Boston, Chicago 1991 - 1993
- AIA ADA Video Conference (3-Part Series) 1992 - 1993
- Aosept, Sick Building Seminar 1992

**Curriculum Vitae 2016**

- Roofing and Waterproofing Seminar 1989
- AIA Managing Design Practice 1989
- Florida Trend Seminar, Issues and Strategies 1989
- AIA Grassroots, Washington, D.C. 1989 - 1990
- Marketing for the Small Business 1986
- Interior Products Seminar, Armstrong World Industries 1986
- Productivity in the Workplace, Westinghouse Corporation 1985
- Quality of Life Seminar 1984
- Systems Drafting and Design 1984
- Land Development for Architects, AIA 1984
- Interfaith Forum on Religion and Architecture Conference 1983
- Energy in Design: Techniques, AIA 1981
- The Passive Energy Studio, PDR 1980

---

**RECENT PROJECTS**

- 
- THA - Interior Office Remodel – Tampa, FL 2015
- THA - Analysis for Mary Bethune & N. Blvd Homes PH II – Tampa, FL 2014
- THA GPNA UPDATES - Mary Bethune & N. Blvd. Homes – Tampa, FL 2014
- Tampa Housing Authority GPNA – Tampa, FL 2014
- 330 Third Street Residences – St. Petersburg, FL 2014
- 2000 Island Blvd – Miami, FL 2014
- LeeSar Roof Consulting Services – Fort Myers, FL 2014
- Rago v. Emerald Pointe Condo Association – Punta Gorda, FL 2014
- Lennar adv. Wekiva Park – Orlando, FL 2014
- Ventura Greens at Emerald Dunes – East Coast, FL 2014
- Harbour House Condo Association – Miami, FL 2014
- Ventanas at Tiburon – Naples, FL 2014
- Sandarac I – Fort Myers, FL 2014
- Sarasota Surgical Physicians Center – Sarasota, FL 2014
- Ferman v. Outback – Sarasota, FL 2014
- Admiral Farragut Academy – St. Petersburg, FL 2014
- Seneker Residence – Naples, FL 2014
- Metropolis Master v. NBWW – Miami, FL 2014
- Wekiva Landings – Orlando, FL 2014
- Lemans v. Summit Contractors (Visconti) – Tampa, FL 2014
- Culbreath Key Bayside Condominium – Tampa, FL 2014
- Bella Capri Condo Association 2014
- Bahama Bay II – Davenport, FL 2014
- Weston 55 Plus Condo Association – Miami, FL 2014
- Coconut Cove Bed & Breakfast – Isla Morada, FL 2014
- Mariners Palm Harbor – Marco Island, FL 2014
- Willow Creek Association – Willow Creek, FL 2014
- Bethel Lutheran Church – Clearwater, FL 2014
- Siena at Celebration – Celebration, FL 2014
- Legacy Park vs. ROJO Architecture – Tampa, FL 2014
- Eye Care Center of Sebring – Sebring, FL 2014
- Townhomes of Oaklane – Coral Gables, FL 2014
- 2800 Island Blvd – Miami, FL 2014
- Patterson Ct Apartments – Orlando, FL 2014

**Curriculum Vitae 2016**

• San Ruffino Condominium – Dunedin, FL	2014
• Margaretville Hotel – Pensacola Beach, FL	2014
• St. Pete Bar Association – St. Petersburg, FL	2014
• Thresholds International v. Robinson - Miami, FL	2013
• Chamberlin - Stormwater Design - Clearwater, FL	2013
• Ferris vs. Kukk Architects - Naples, FL	2013
• Park Central - Fort Myers, FL	2013
• Sandarac II - Fort Myers, FL	2013
• The Cloister Condo - St. Petersburg, FL	2013
• Leal Res NVC - Tampa, FL	2013
• Alinari Condo - Sarasota, FL	2013
• MK Contractors vs. Zyscovich - Coconut Grove, FL	2013
• Oviedo Forrest Consulting - Oviedo, FL	2013
• Marquis Condo vs. Arquitectonica - Miami, FL	2013
• St. James Preservation - Tampa, FL	2013
• Ritz Carlton - St. Thomas, British Virgin Islands	2013
• Signature Place Legal - St. Pete, FL	2013
• Ventura at Turtle Creek Condo - Turtle Creek, FL	2013
• Cypress Manor vs. CBA - Tampa, FL	2013
• Gibbons Federal Courthouse - Tampa, FL	2013
• Douglas Jeep - Venice, FL	2013
• Willow Brook Condominium KB Homes - Sarasota, FL	2013
• St. James Episcopal Church - Tampa, FL	2013
• Parkcrest II Condo - Tampa, FL	2013
• Naples Motorsport Inspection - Naples, FL	2013
• Lemmer Residence - Tampa, FL	2013
• Horizons West Condominium	2013
• Tampa Bay BEC Council (AIA) - Tampa Bay, FL	2013
• Woodbridge Crossing – Atlanta, GA	2013
• Flagship Condos – Sanford, FL	2013
• Aloft Hotel at Tapestry Park – Enclosure Re-Cladding, Jacksonville, FL	2012
• Private Residence – Enclosure Re-Cladding, North Captiva Island, FL	2012
• Signature Place Condo – Moisture Intrusion Consulting, St. Petersburg, FL	2012
• Cypress West Office Building – Moisture Consulting, Tampa, FL	2012
• Nicklaus Residence – Consulting, St. Pete Beach, FL	2012
• Alagon Condominium – Tampa, FL	2012
• Courtney Landing Condominium Consulting – Orlando, FL	2012
• Tampa Housing Authority – 600 Bldg. Audit PNA, Tampa	2012
• Xero Gravity Hotel & Resort Consulting – Jacksonville, FL	2012
• St. Petersburg MSC, MSC Garage, City Hall Waterproofing	2012
• Botanical Place Condominiums – Naples, FL	2012
• Meadows of Estero – Naples, FL	2012
• Multiple ADA Claims Cases – Tampa, FL	2012
• St. Andrews Condominium Consulting – Lakeland, FL	2012
• Charlotte County Public Schools: Punta Gorda Center - Charlotte Co., FL	2011
• Norwood Water Treatment Facility, North Miami Beach, FL	2011
• Multiple Cases – CNA Insurance, Tampa, FL	2011
• Multiple Condominium Defense Cases, Clearwater & Bonita Springs, FL	2011
• Kritikos Residence, Jupiter, FL	2010
• Pulte Homes – Multiple Condominium Cases in Florida	2010

**Curriculum Vitae 2016**

- Architect Standard of Care – Multiple Cases in Florida 2010
- Tampa Housing Authority – Multiple Projects 2010
- ADA Case - Isle Del Sol Shopping Center, St. Petersburg, FL 2010
- Multiple Condominium Cases throughout Florida 2010
- Kennesaw State University Apartments, GA 2010
- Castille Parking Deck, Clearwater, FL 2010

---

**SIGNIFICANT PROJECTS**

- Parkcrest Condominium, 8 story, Painting, Waterproofing, Doors/Windows, Tampa, FL 2017
- Gulf Coast Medical Center Expansion, 7 story, \$200M Consulting, Fort Myers, FL 2017
- Bayfront Towers, 28 Story Envelope Consulting Project, St. Pete, FL 2016
- Cape Coral Hospital 7 Story Waterproofing Wall Repairs, Cape Coral, FL 2016
- Bahama Bay II, 13- 3 story Building, Roof and Wall Repairs Davenport, FL 2016
- Visconti Apartments, 4 story, 400 units, Stucco Repairs, Coatings, Tampa, FL 2016
- Ventanas Condominium, Plaza Deck Repairs and Replacement, Naples FL 2015
- Mariners Palm Harbor Condominium, 7 Story, 4 FL. Plaza Deck Replacement, Marco FL 2015
- Signature Place Condominium Repairs, 36 Story, St. Pete, FL 2015
- Tampa Housing Authority, 600 Bldg. Physical Needs Assessments, Tampa FL 2015
- Westminster Services, Bahama Shores Senior Living Center, St. Pete, FL 2009
- St. Petersburg Housing Authority – Multiple Projects, Tampa, FL 2009
- Pinellas Housing Authority – Multiple Projects, Pinellas Co., FL 2009
- Tarpon Springs Housing Authority – Physical Needs Assessment 2009
- Tampa Housing Authority - Moses White Apartments  
LEED for Homes Certification 2009
- Georgia Institute of Technology, Atlanta, GA  
Physical Needs Assessment & LEED EB Gold Certification 2009
- Hartsfield – Jackson Atlanta International Airport, Atlanta, GA  
Vertical Transportation Study, 277 Elevators, Escalators, Horiz. People Movers 2009
- Lee Memorial Health Park, South Moisture Investigation, Fort Myers, FL 2009
- CC-Aventura, Condominium Towers & Healthcare Center Case, Aventura, FL 2009
- Pulte Homes Grand Cay Case, Fort Myers, FL 2009
- Summit Parking Deck Case, Naples, FL 2008
- Paradiso Condominium Expert Services and Repairs, St. Petersburg, FL 2008
- Multiple Toll Brothers Condominium Cases in Fort Myers & Naples, FL 2008  
Miromar Outlet Mall, ADA Improvements - Estero, FL 2008
- Charlotte County Public Schools  
CTC Master Plan updates 2004  
CTC Medical Sciences Building, Published & Awarded 2006  
CTC Childcare Center 2007  
CTC ABC Building 2008
- New College Residence Halls, Sarasota, FL 2007
- New Port Richey Recreation & Aquatics Center 2007
- Georgia Institute of Technology, Atlanta, GA 2007  
Building Investigation, Property Condition Assessment
- Eckerd College Omega Dorm, St. Petersburg, FL 2006
- Miromar Outlet Mall Expert Services and Repairs, Estero, FL 2005
- USF St. Petersburg Student Housing Complex, St. Petersburg, FL 2005  
Design Criteria Architect – 354 Beds
- USF St. Petersburg Parking Garage, St. Petersburg, FL 2005  
Design Criteria Architect – 950 Spaces

**ROBERT J. BITTERLI, AIA, NCARB, LEED AP**

President/CEO

Principal Consultant, Expert Witness



**Curriculum Vitae 2016**

- USF Cypress Hall, 602 Bed Housing Complex, Tampa, FL 2004  
Published in Real Estate & Construction Review - Florida Edition
- Disaster "Hardening" of MOSI, Tampa, FL 2002  
Working with FSU, USF and Hillsborough County Government
- Continuing Contracts with Pinellas County, Cities of Tampa, 2002  
St. Petersburg, Clearwater, Indian Rocks Beach
- American Lung Association Corporate Headquarters, St. Pete, FL 2001
- SPC University Partnership Center, Seminole Campus 2001
- St. Petersburg Historic City Hall Waterproofing 2000
- SPC Technology Learning Center, Seminole Campus 1999
- SPC Seminole Campus Master Plan 1995
- City Hall, City of Milton, FL 1996
- Seminole High School Rec. /Science Facilities, Seminole, FL 1995
- Grace Lutheran Church/School, St. Petersburg, FL 1994
- Largo High School, Largo, FL 1992
- Oldsmar City Hall, Oldsmar, FL 1990
- Skyway Business Center, St. Petersburg, FL 1988
- Police Communications Center, St. Petersburg, FL 1987